



Join us at ISE 2016!

The first ever four-day ISE exhibition starts today through until Friday 12th at Amsterdam RAI, NL. If you are attending the exhibition and would like to meet up, you can contact us directly on these numbers:

Stanislas Boivin-Champeaux +44 (0) 7957 355 962
Hanieh Motamedian +44 (0) 7884 117 520

[Register Here](#)

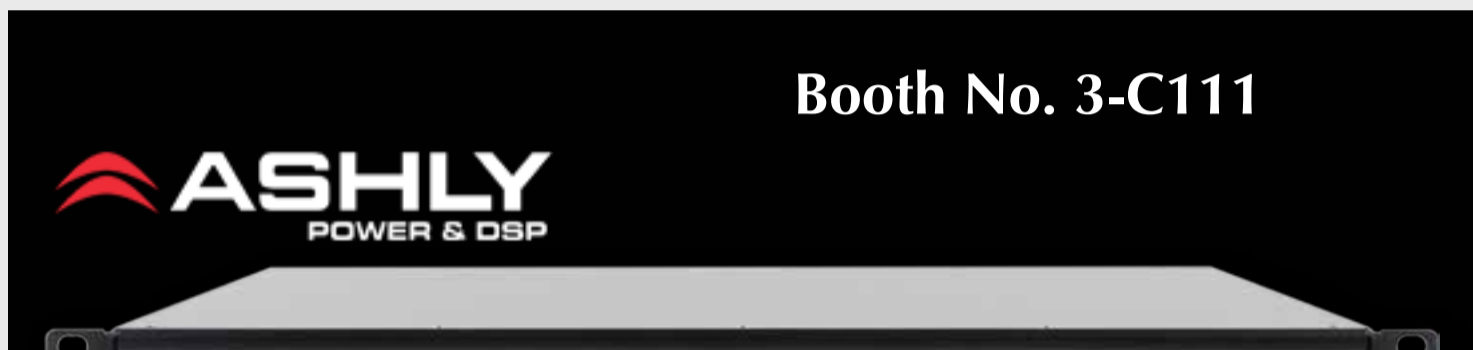
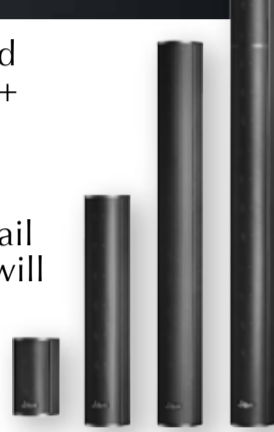


Booth No. 3-A114

Active Audio, manufacturers of the Ray-On Passive Column Loudspeakers and StepArray Active column loudspeakers will be launching the new StepArray+ Column Loudspeaker Series featuring on-board Dante®, at ISE 2016.

The Ray-On column loudspeakers, including the Rmini EN54-Type B mini-column, perfect for installations requiring excellent intelligibility in retail shopping malls, transportation facilities, auditoriums and public buildings will also be available for demonstrations throughout the exhibition.

[Find out more...](#)

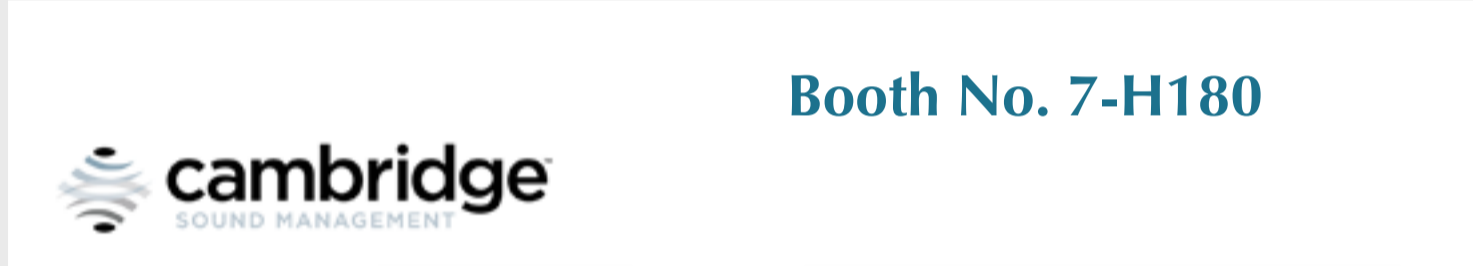


Booth No. 3-C111



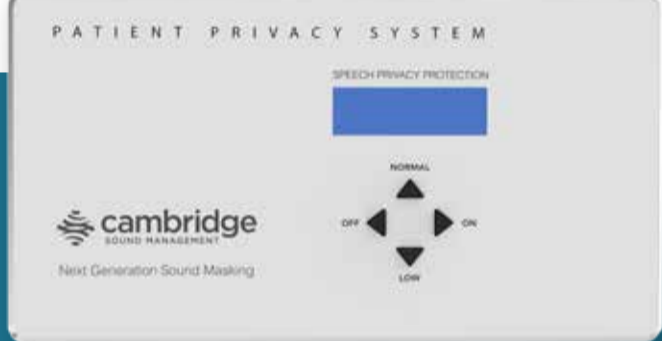
Ashly Audio Inc. is recognized as a world leader in designing and manufacturing quality signal processing equipment and power amplification for use in the commercial sound contracting markets.

[Find out more...](#)

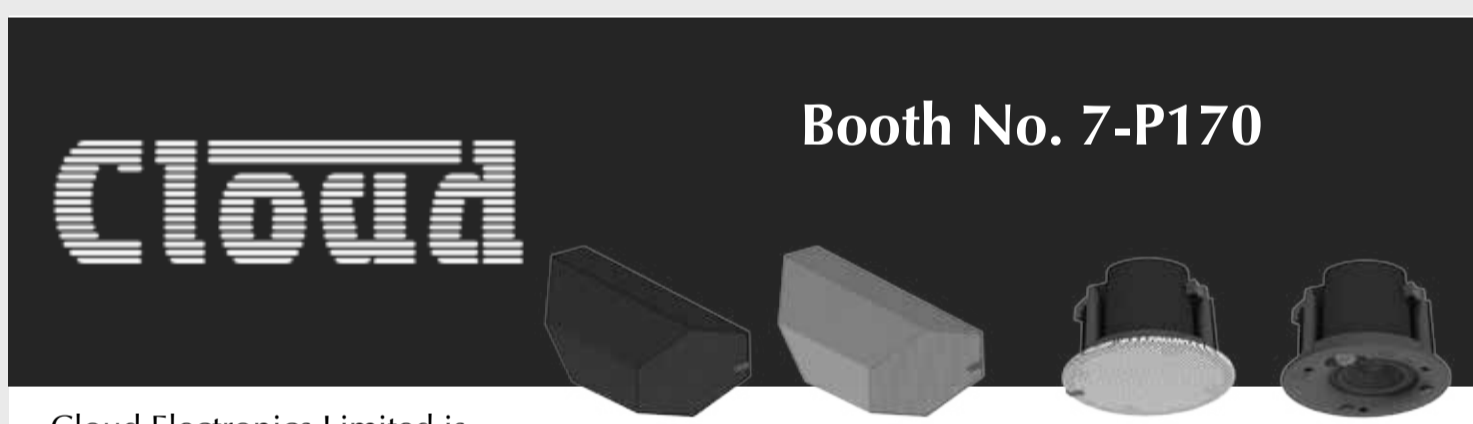


Booth No. 7-H180

A new edition of the Conference Room Sound Masking System and several other new products are promised by Cambridge Sound Management.

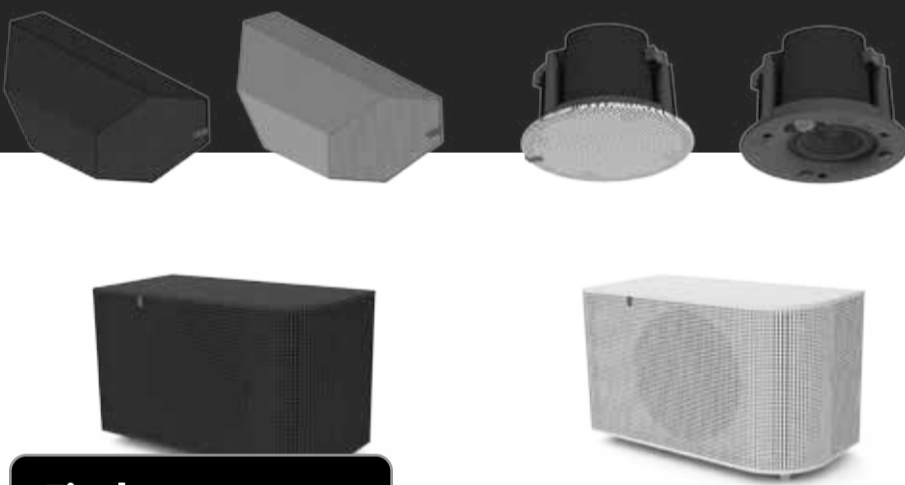


[Find out more...](#)

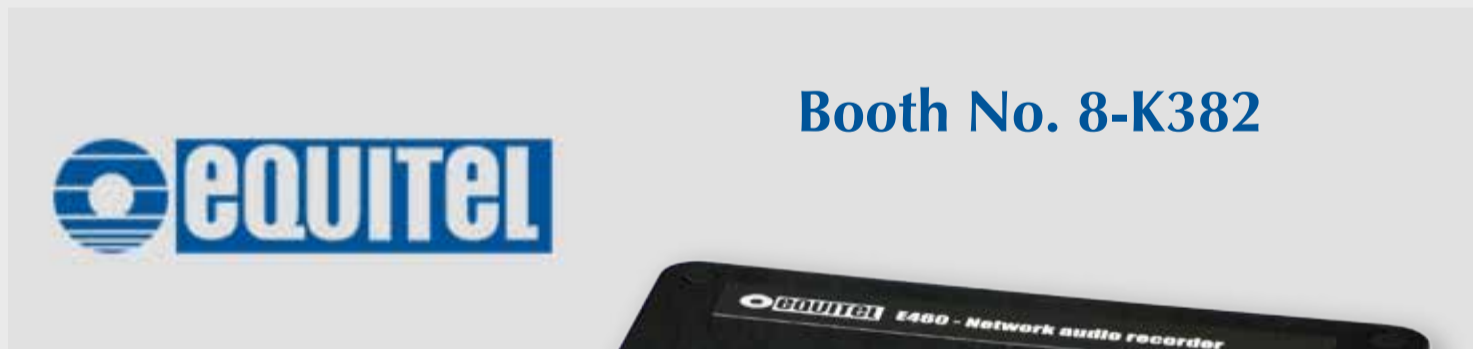


Booth No. 7-P170

Cloud Electronics Limited is launching additional models in its CS-Speaker Series including the CS-C3 3" Ceiling Speaker, CS-S3 Omnimount 3" Surface Speaker and CS-SUB8 Surface Mount Subwoofer, designed for Retail, Hospitality, Leisure and Commercial projects.



[Find out more...](#)



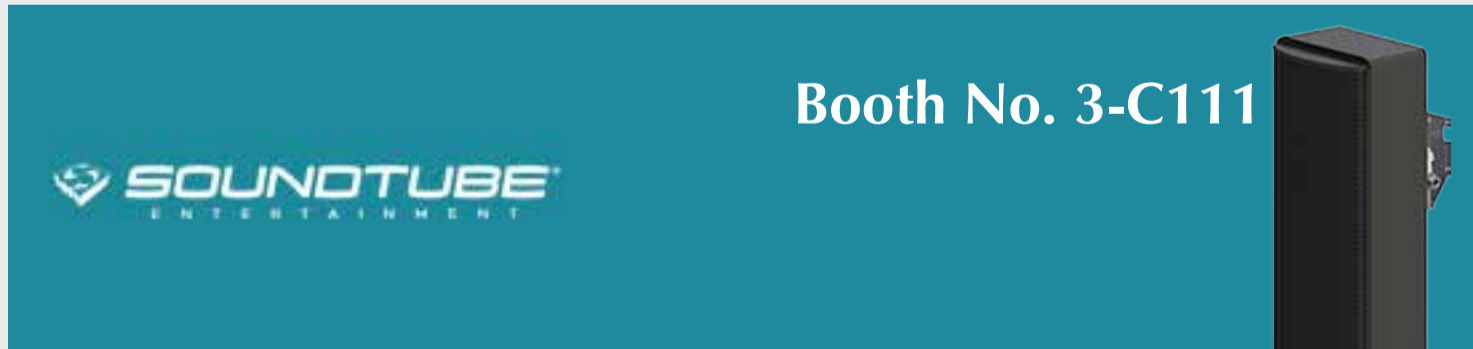
Booth No. 8-K382

EQUITEL is a manufacturer of IP audio encoders and decoders for use in PA and audio distribution in shopping centres, education and industrial projects.



The E460, launching at ISE 2016, a Network Audio Recorder that records audio streams to MP3 / WAV.

[Find out more...](#)



Booth No. 3-C111

SoundTube will be exhibiting lots of new products for the very first time in Europ at ISE 2016 including the new SM-EZ range of surface loudspeakers including four outdoor rated models, the XT-Spyke outdoor line array column loudspeaker and a number of Dante® IP loudspeakers.

SoundTube is also expecting to announce further EN54 compliant models by mid-2016.

[Find out more...](#)



Register for the Online Catalogue Here – [click here to get started](#)

500+ Products Available to View Online

+44 (0) 20 8391 2000

sales@sounddirections.co.uk www.sounddirections.co.uk

When you need answers